



**Professor Richard Davies**  
(Vice-Chancellor)

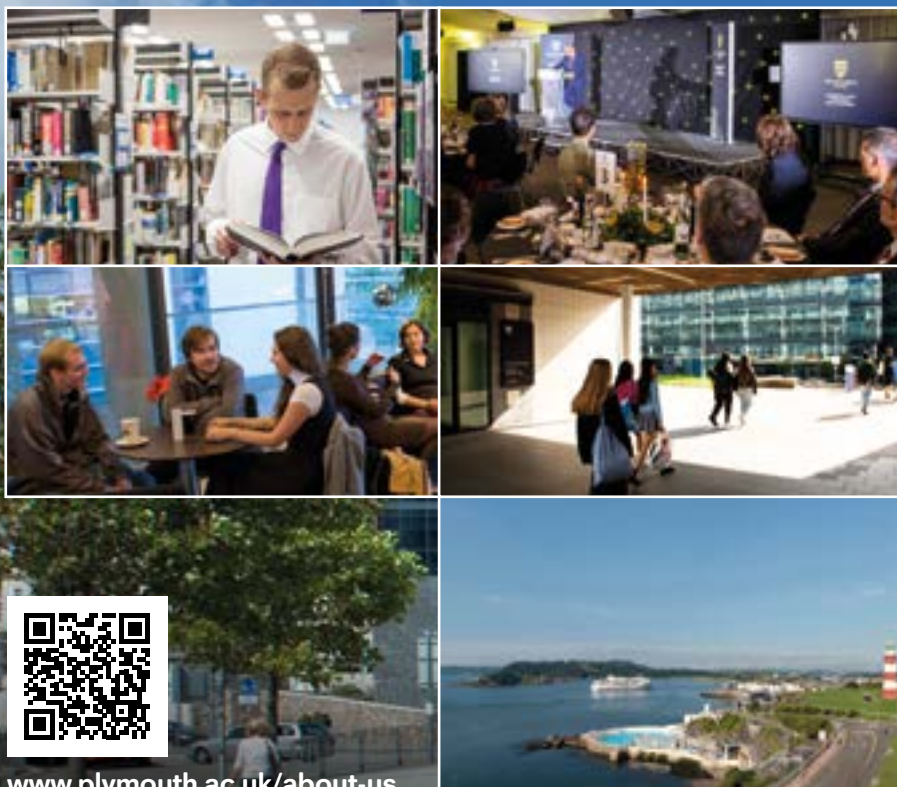
"Our people share a determination to push boundaries, think differently and achieve more. As an employee, you'll play a crucial part in building our impressive reputation in education, innovation and research. Our success revolves around the people who work here. In return, we'll support, nurture and reward you with generous benefits, from training and development to childcare and flexible working as well as supporting your health and wellbeing. We recognise all our staff have different priorities and lifestyles, so we make sure there are benefits to suit everyone."



**UNIVERSITY OF  
PLYMOUTH**

# Why work for the University of Plymouth?

**Advancing knowledge, transforming lives.**



[www.plymouth.ac.uk/about-us](http://www.plymouth.ac.uk/about-us)



Depending on eligibility, tenure and grade,  
here are some of the benefits to you:



Enjoy our comprehensive package of benefits, from competitive pay to generous pension schemes and retailer discounts.

### Financial benefits

- Competitive pay
- Generous pension schemes (\*18.8% average employer contributions)
- Up to 6 months sick pay
- Up to 46 days annual leave (including bank holidays and closure days)
- Relocation scheme
- Retailer discounts
- Cycle to Work Scheme
- Electric Car Scheme



We understand the importance of continued professional development, so you can achieve your ambitions as well as those of the university.

### Career and Learning

- Annual performance review
- Support with tuition fees (up to 10%)
- Mentor schemes and coaching
- LinkedIn Learning access
- Your Development Toolkit



Working here, you will have access to a range of facilities, programmes and policies supporting you in your health and wellbeing.

### Lifestyle and Wellbeing

- Family friendly policies (maternity, paternity, adoption, shared parental)
- Occupational Health
- Flexible working from day one
- Employee assistance Programme
- On-site Nursery
- Access to gym and free swimming
- Disability Confident employer



Bring your whole self to our campus and be a part of our diverse community, with equality and sustainability integral to how we work.

### Community and Culture

- Staff networks
- Inclusive Employer
- Pastoral and spiritual support
- Support EDI Charter Marks
- Social Enterprise Mark
- Gold in TEF 2023 rating
- 3 Queen's Anniversary Prizes
- Global impact for our research in marine and maritime

### Find out more:

[plymouth.ac.uk/about-us/jobs/employee-benefits](https://plymouth.ac.uk/about-us/jobs/employee-benefits)



\* Data taken @ November 2023  
across all pension schemes

