



UNIVERSITY OF
PLYMOUTH

EDUCATION AND STUDENT EXPERIENCE STRATEGY

2024–2030



EDUCATION AND STUDENT EXPERIENCE STRATEGY 2024-2030

University of Plymouth

The University of Plymouth 2030 Strategy provides the overarching mission, vision and core principles on which the Education and Student Experience Strategy is designed.

Our University **advances knowledge and transform lives** – none more so than the lives of our students. This mission is threaded throughout our education and student experience strategy, supporting all students to realise their potential and succeed in their futures. Our students will experience an education that broadens their knowledge, abilities and awareness as global citizens to the benefit of both their intellectual and personal growth.

This strategy is relevant to all students studying for a University of Plymouth degree, both on-site and online, as well as those studying with our UK and transnational education partners.

STRATEGIC PRIORITIES FOR EDUCATION AND STUDENT EXPERIENCE

PRIORITY ONE: DESIGN AND DELIVER A PORTFOLIO OF TRANSFORMATIVE EDUCATION

Design an education portfolio that transforms lives; we will ensure that our portfolio of undergraduate and postgraduate taught programmes, including apprenticeships, meet the needs of current and future students and employers, providing cutting-edge, authentic, and experiential education and assessment in disciplines needed by employers and society. We will develop a range of innovative and industry informed and relevant continuing professional development and post graduate offers; including short courses and micro-credentials to support life-long learning and career development.

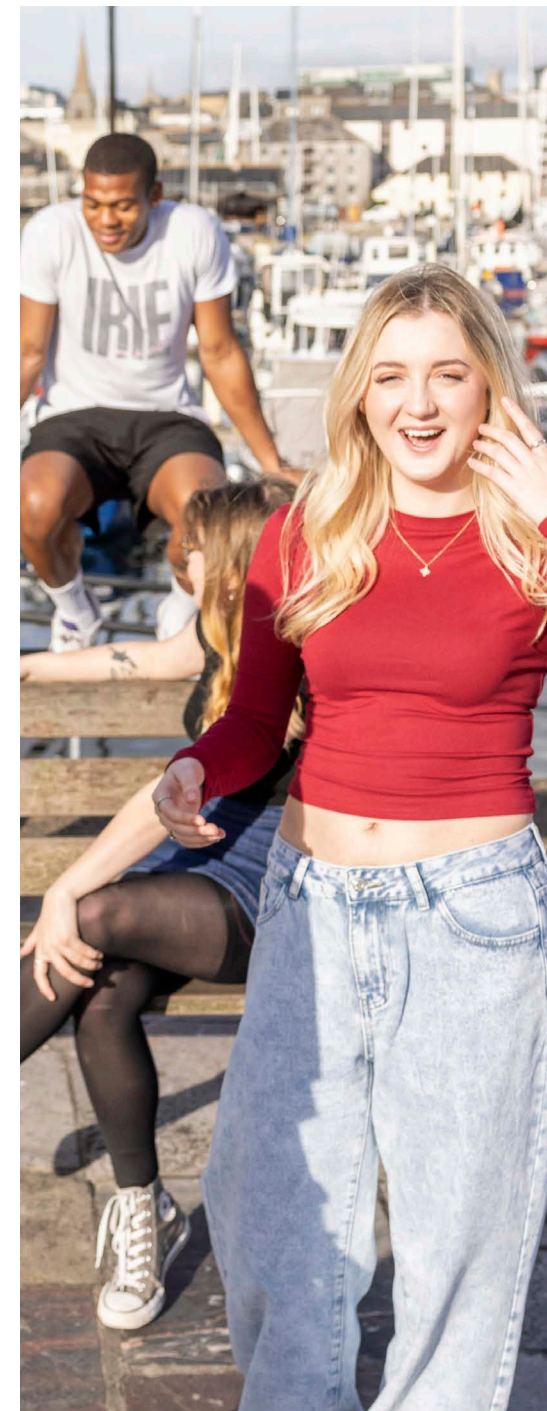
Deliver programme excellence; our programmes will deliver an excellent educational experience covering the latest developments in each academic discipline, aligning learning to advances in research, technology, real-world global challenges within the workplace and society, whilst also providing opportunities to stretch and challenge our students and maximise their potential. This will include students learning about the use of artificial intelligence in their studies and authentic workplace settings. Through regular and robust quality improvement we will ensure that all programmes maintain the highest standards of both the University and relevant accrediting bodies, including those of our partners.

Multidisciplinary, interdisciplinary and interprofessional education; the current and future workforce operates across disciplines and alongside colleagues from other professions. We will ensure that multidisciplinary and interdisciplinary learning are embedded by creating programmes and learning spaces that bridge the variety of disciplines in Schools and Faculties across the University and capitalise on the University's interdisciplinary research. These approaches will be further enhanced through workplace relevant interprofessional learning where students from different disciplines will learn how to work together effectively.

Research-led and research-informed education; University of Plymouth staff lead regional, national and international research which is at the forefront of their disciplines. Education will be informed directly by research and its methodologies and critical thinking will be built into every programme. All students will be able to engage not only with the latest research in their discipline but with the research facilities.

Education for sustainable development; every learner will be educated in multiple aspects of sustainability. Understanding and critical assessment of the UN Sustainable Development Goals will be embedded in the curriculum, ensuring that students are aware of the global challenges and solutions, and that they acquire appropriate skills to navigate and support the development of sustainability as active citizens and in their future workplace.

Civic and Societal; we will actively encourage and support our students to engage with their local community through studying and working in our social enterprise facilities, volunteering, work placements and supporting local, regional national and international projects.





STRATEGIC PRIORITIES FOR EDUCATION AND STUDENT EXPERIENCE

PRIORITY TWO: FLEXIBLE AND INCLUSIVE LEARNING

Flexible learning; programmes will be designed and delivered to ensure our teaching, learning and assessment is effective for the diverse student population of the University of Plymouth, including validated programmes delivered by our regional and international partners. This will include a timetable designed to support both students and staff, support for flexible learning, an equitable student experience for students who study away from the campus and creating flexible assessments. Our education will be technology-enabled, including the use of virtual and augmented reality, and digital first solutions that integrate the physical and digital learning environments. We will continue to develop sustainable, flexible, inclusive and innovative on-site and online learning spaces that support current pedagogies and effective learning for all groups of students.

Inclusive education; Ensuring inclusivity in our teaching, assessments and support for students will allow all our students to achieve their potential and ambitions whatever their backgrounds. This will include, but is not limited to, supporting disabled, commuter, care leaver, international, first in family, minority ethnic and mature students. The inclusivity of our student experience will be enhanced through extensive student engagement, co-creation of our programmes and activities and celebration of our diversity.

STRATEGIC PRIORITIES FOR EDUCATION AND STUDENT EXPERIENCE

PRIORITY THREE: SUPPORT, WELLBEING AND STUDENT VOICE

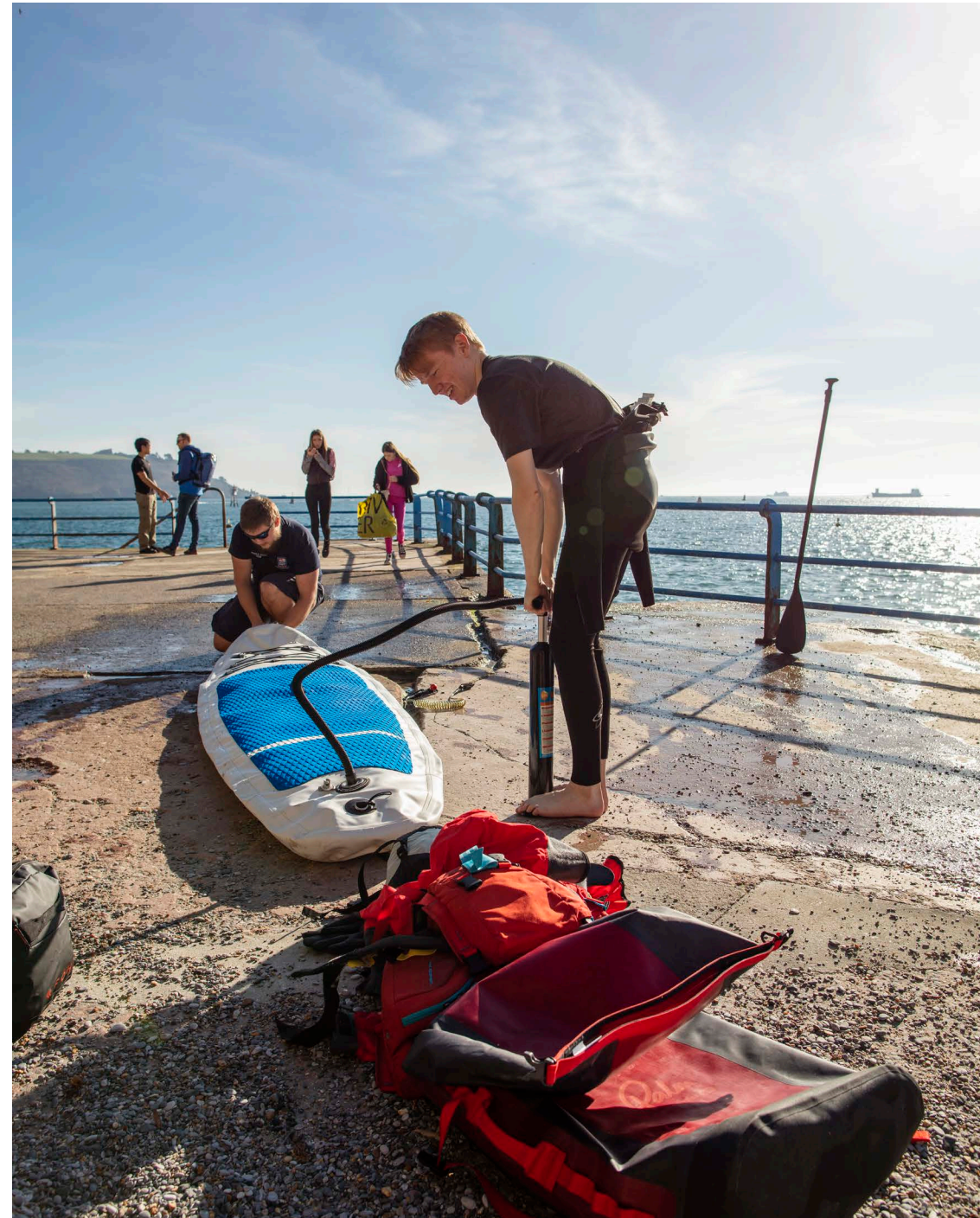
Wellbeing; we will develop a holistic approach to student and staff wellbeing, ensuring that we support all individuals in our community. This will include the design of academic regulations and policies to ensure that student and staff wellbeing are considered in our approaches. Academic and wellbeing support will be provided throughout their course, and we will support and encourage students to fully engage with the breadth of university opportunities outside of their studies. We will provide appropriate support for their mental health at each stage of their journey with the University adopting the University Mental Health Charter framework to support its work. We will continually strive to ensure a safe, welcoming and diverse educational, social and living environment, which is inclusive, tolerant and respectful enabling all students to thrive, whilst maintaining their freedom of expression.

Supporting students; our support for students will be personalised and supported using learner analytics, developing the academic and inter-personal skills necessary for their discipline, stage of study and personal circumstances, each linked to specific graduate attributes. Academic and professional services support will contribute to developing the appropriate skills in our students, and we will work alongside the University of Plymouth Student's Union to support all students to succeed.

Supporting staff; alongside our work with students, we will support our academic, technical and professional services staff to develop the attributes required to drive student success, embedding a vibrant and engaging culture of education within each School and support service. Excellence and innovation will be celebrated through an annual Teaching and Learning Showcase, staff promotion and awards, staff development, and achievement of AdvanceHE fellowships.

Co-creation; we will work with our students and employers to co-create components of our curricula and assessments, and ensure that our approaches to education support the diversity of the student population. Our students and Students' Union will be equal partners in this work ensuring that the student experience is at the heart of design and delivery.

Student feedback; we will listen and respond to the student voice, contributing to quality assurance, quality enhancement and the student experience. Communication between students and University staff will ensure both feedback and feedforward, and we will close the loop to ensure students are aware of changes we have implemented in line with our focus on continuous improvement.





STRATEGIC PRIORITIES FOR EDUCATION AND STUDENT EXPERIENCE

PRIORITY FOUR: SUCCESS NOW AND IN THE FUTURE

Successful graduates; the educational gain of our graduates, as detailed in the Plymouth Compass, will prepare them for the world of work and life. Our graduates will be flexible, resilient and agile, ensuring that they are able to succeed in a variety of careers and a rapidly changing workplace environment, supported by skills for life-long learning. Experiential real-world learning, including where relevant practice-based learning, internships, and placements, as well as entrepreneurship and careers development will be embedded into their programmes. Combined with on-demand careers support, this will ensure that our graduates develop a growth mindset to remain competitive in the global workplace.

Learning when in work; Alongside supporting the success of our students, we will develop portfolios of non-standard provision to provide training to meet the current and future skills needs of the region, nation and globe. Provision will be developed in partnership with employers, packaged appropriately to support learning for those in work, including degree apprenticeships, and delivered through both distance learning and face-to-face, and where relevant using our world-leading research facilities.



MEASURES OF SUCCESS

Success of our Education and Student Experience Strategic Plan will be measured by several key performance indicators, with an expectation that these will improve over time and where sector data are available will remain in or move to the top quartile.

Student success will be measured by their continuation, completion, award and positive graduate outcomes. This will include reducing gaps for defined student groups (ethnicity, gender, indices of social deprivation, care leavers, disability), aligned with the measures of performance in our Access and Participation Plan. The quality of the student experience will be measured using national (National Students Survey; Postgraduate Taught Experience Survey; Postgraduate Research Experience Survey) and local University and Student Union surveys.





UNIVERSITY OF PLYMOUTH

True to our roots and place we are pioneering and we advance knowledge and transform lives.